



**CTEK MXS 3.6**

**3.6 A**



# PROVEN RELIABILITY

## CTEK MXS 3.6

The MXS 3.6 is a proven and reliable charger. It offers important features such as desulphation, maintenance charging and cold mode for optimised charging during cold winter days. It is also suitable for charging demanding AGM batteries (i.e. Optima). It is the ideal charger for those looking for quality and simple connect and forget charging. The MXS 3.6 is a fully automatic 4-step charger that charges 12 V batteries from 7-75 Ah and is suitable for maintenance charging up to 120 Ah. The MXS 3.6 is IP65 classified (splash and dust proof) and delivers selectable 0.8 A or 3.6 A. It is designed to protect vehicle electronics and is non-sparking, reverse polarity protected, and short-circuit proof. The MXS 3.6 is delivered with a 5-year warranty.



Fully automatic for optimal charging



For all lead-acid batteries



FULLY CHARGED BATTERY / MAINTENANCE CHARGING



For charging in cold conditions and AGM batteries



### TECHNICAL DATA

CHARGING VOLTAGE	14.4/14.7 V
CHARGING CURRENT	0.8/3.6 A
TYPE OF CHARGER	4 step, fully automatic charging cycle
TYPE OF BATTERY	12 V lead-acid batteries
BATTERY CAPACITY	7-75 Ah, 120 Ah maintenance
INSULATION	IP65 (splash and dust proof)



**THE SMARTEST BATTERY CHARGERS IN THE WORLD**



- Fully automatic charging and maintenance in 4 steps maximizes battery life and performance
- Numerous accessories simplifies using the same charger for multiple batteries
- One charger for the car, motorcycle, lawn mower, snowmobile, sump pump and tractor
- Water-resistant so that the solution could be taken to the problem even if it rains or snows
- Patented desulphation that extends the battery life
- No sparks, short-circuit proof and reverse-polarity protected for untroubled usage

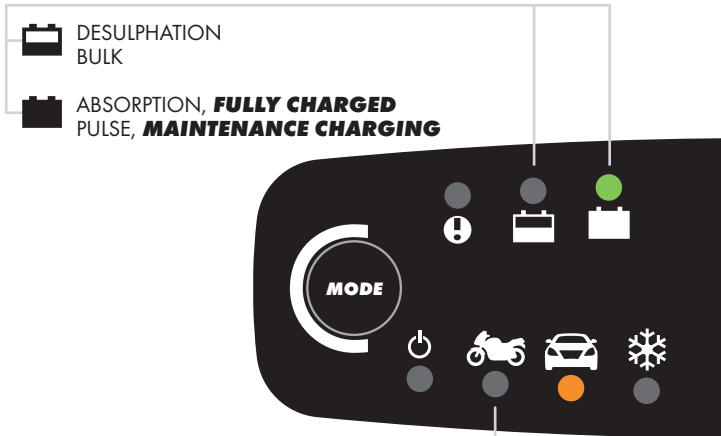
**READY TO USE**



The table shows the estimated time for empty battery to 80% charge.

BATTERY SIZE (Ah)		TIME TO 80% CHARGED
7		7 h
14		3 h
20		5 h
60		13 h
75		17 h

**CTEK CHARGING**

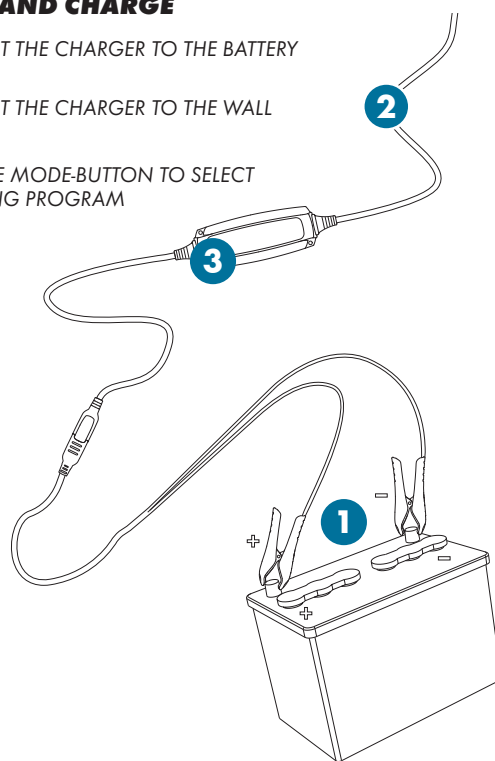


**CHARGING PROGRAMS**



**CONNECT AND CHARGE**

- 1 CONNECT THE CHARGER TO THE BATTERY
- 2 CONNECT THE CHARGER TO THE WALL SOCKET
- 3 PRESS THE MODE-BUTTON TO SELECT CHARGING PROGRAM



**GUARANTEED QUALITY WITH CTEK**

CTEK offers a 5 year warranty on all professional chargers. CTEK customer support is available to answer any questions related to charging and CTEK chargers. Safety, simplicity and flexibility characterizes all products and solutions developed and sold by CTEK. CTEK supply chargers to more than 60 countries throughout the world. CTEK is also a reliable OEM supplier to many of the world's most prestigious car and motorcycle manufacturers. **Contact customer support: [info@ctek.com](mailto:info@ctek.com)**

**Customer support: [info@ctek.com](mailto:info@ctek.com)**

**[www.ctek.com](http://www.ctek.com)**



**THE SMARTEST BATTERY CHARGERS IN THE WORLD**